

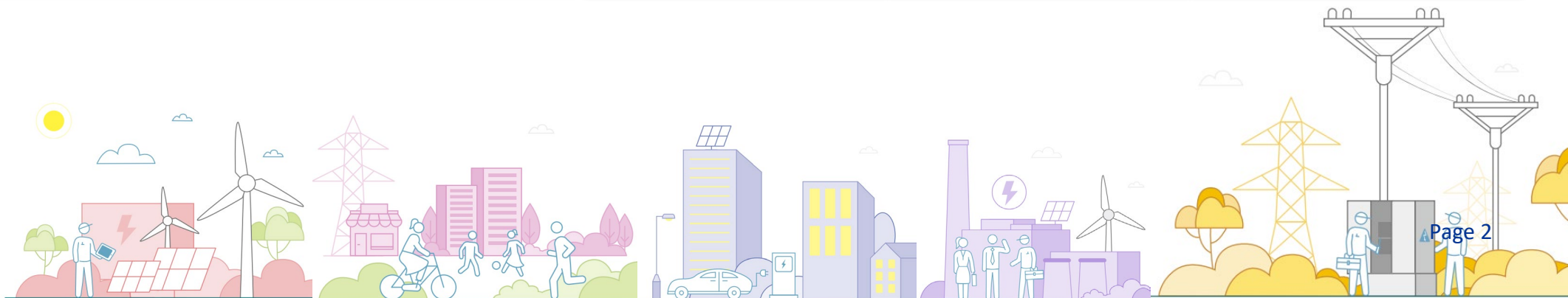
2025 Tariff Review

Presentation to LegCo Panel
on Environmental Affairs

19 November 2024

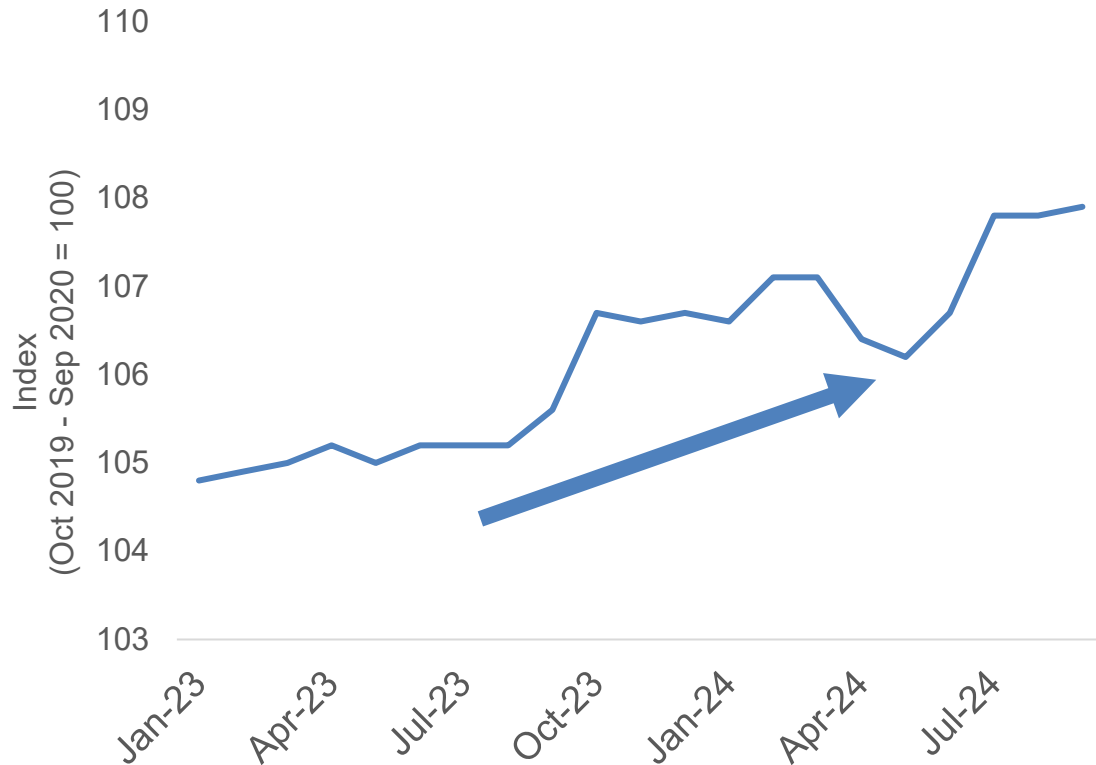
Tariff Adjustment in January 2025

Tariff Adjustment (¢/kWh)	Jan 2024	Jan 2025	Change ¢
Basic Tariff	96.6	98.0	+1.4
Fuel Clause Charge	46.3	46.3	---
Average Net Tariff	142.9	144.3	+1.4 (+0.98%)

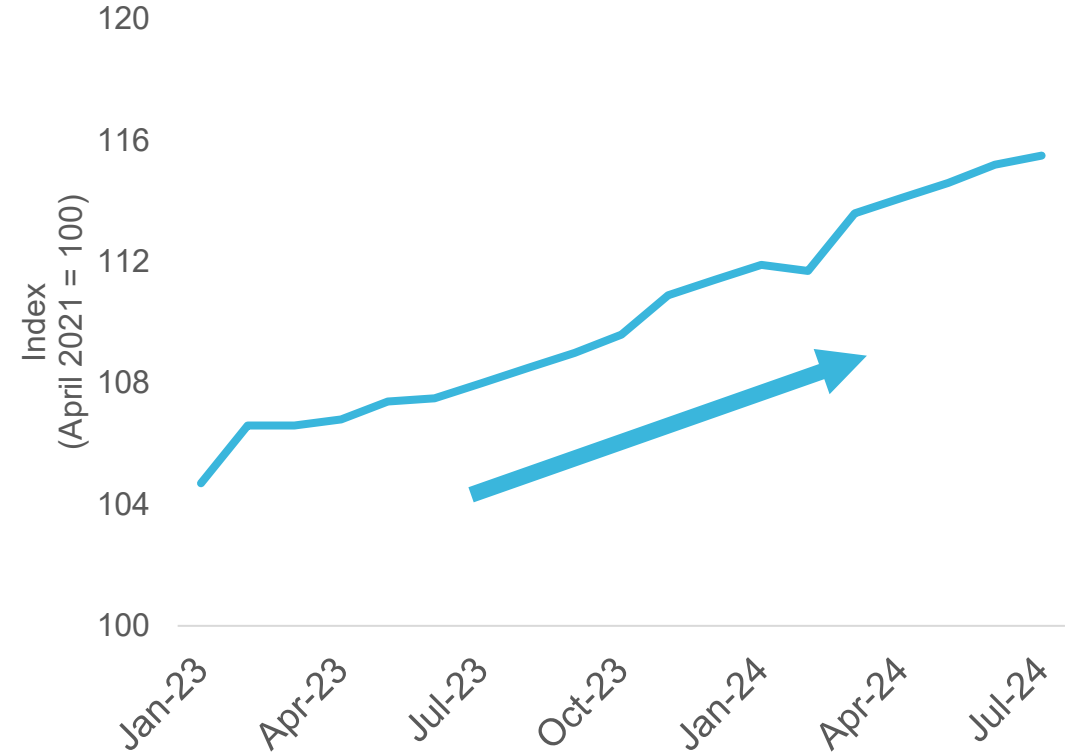


Prudent Cost Control Against Rising Operating Costs

Composite Consumer Price Index



Costs of Labour Index – Civil Engineering Contracts (Public Sector Construction Projects)



Source: Census and Statistics Department

Fuel Prices Largely Stable, But Uncertainty Remains

International Fuel Prices Trend



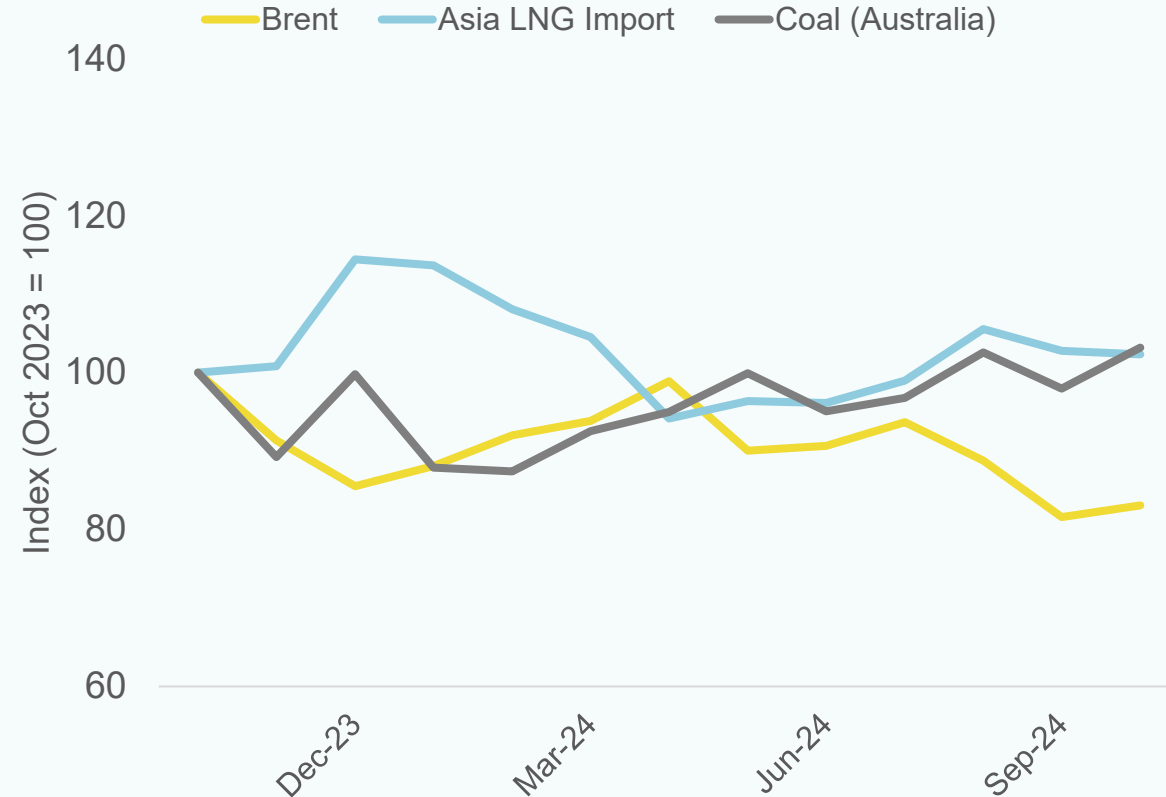
Coal Market Price



Asia LNG Import Price



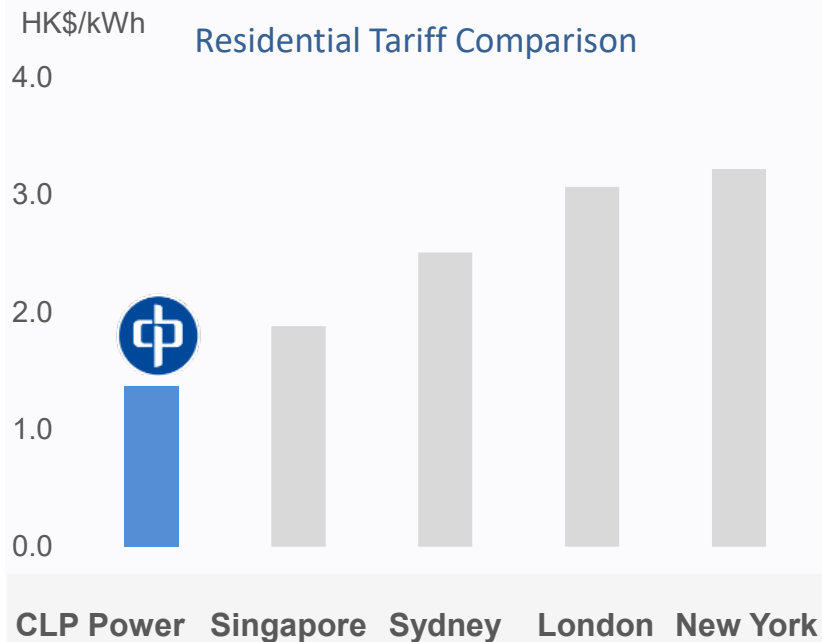
Brent Crude Oil Price



Source: World Bank

Reliable and Clean Supply at Reasonable Tariffs

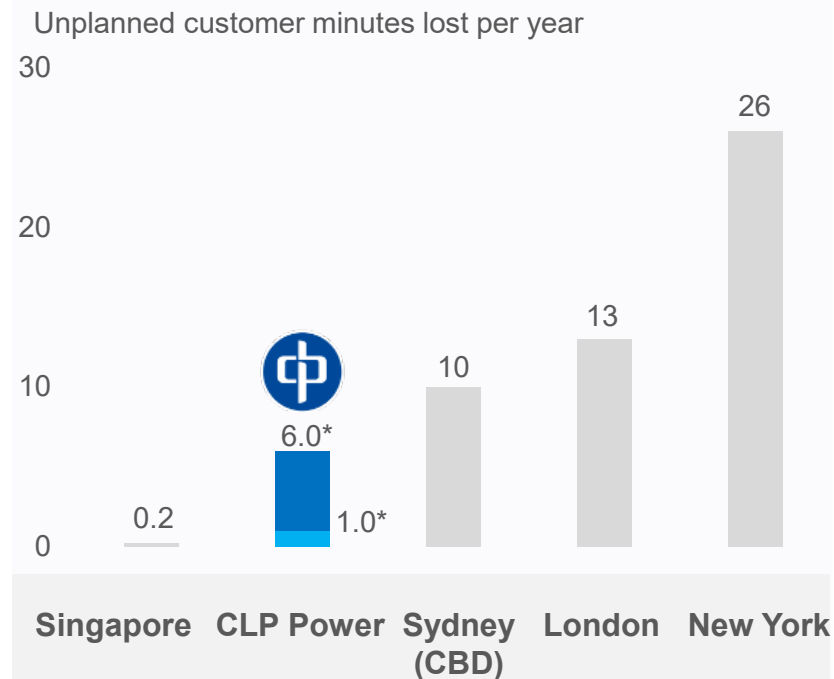
Competitive Tariff



Notes:
 Tariff and exchange rates in October 2024
 Comparison based on monthly domestic consumption of 275kWh

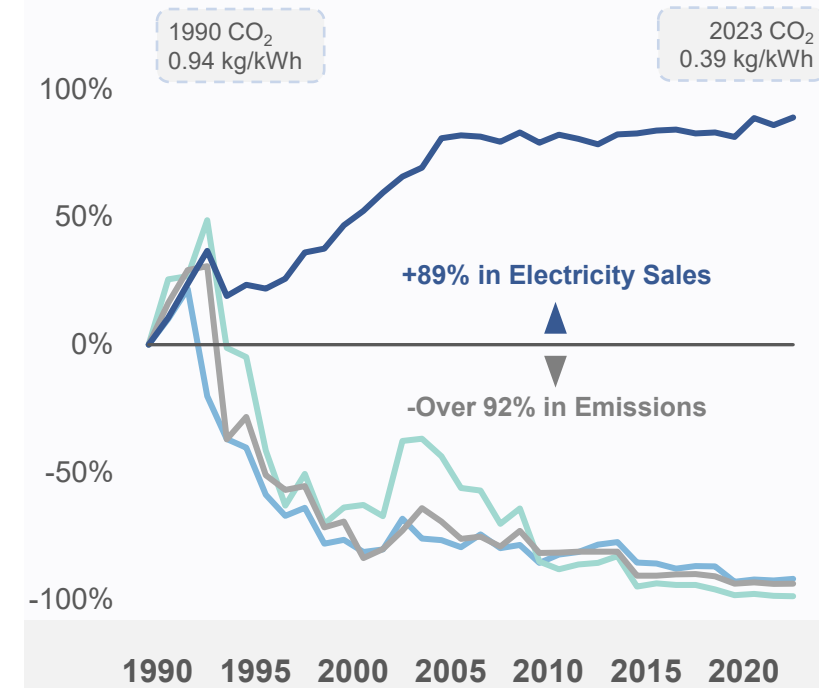


High Reliability



Notes:
 (1) *2021-2023 average for CLP Power was 6.0 minutes; Taking out the impact due to Major Event Day (such as cable bridge fire incident in Yuen Long in 2022 and Typhoon Saola in 2023), the three-year average was 1.0 minute.
 (2) 2020-2022 average for all other cities and there are no overhead lines in Singapore.

Clean Supply



— Nitrogen Oxide (NOx)
 — Sulphur Oxide (SOx)
 — Respirable Suspended Particulates (RSP)

World-Class Reliability Despite Increasing Extreme Weather

Super Typhoon "Saola" hit Hong Kong on 1st & 2nd September 2023



+10 38 Hours Typhoon Signal 8 or above

"Once-in-500-years" Heavy Rainstorm on 7th September 2023



~158mm Hourly rainfall
(Highest record since 1884)

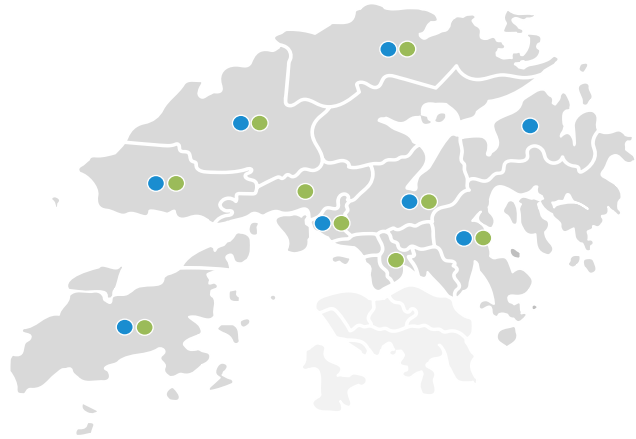
Heavy Rain, flooding and landslides on 4th May 2024



~7 Hours Red Rainstorm Signal

CLP maintained a highly reliable supply of electricity during extreme weather events

Supporting Hong Kong's Growth and Development



Meeting Needs of New Development Areas & Housing Growth

- New Development Areas (NDAs)
- Accelerated housing supplies



Powering Hong Kong's Economic Growth & New Industries

- New railway projects
- Data centres
- Hospital re-development & expansion
- Other infrastructure

New Development Area – e.g., Northern Metropolis and Tung Chung New Town Extension



Ho To West Substation



Power Supply Infrastructure

Robust and reliable network already in place with sufficient capacity to power planned residential, business, infrastructure and technology demands

Continuing Decarbonisation and Building a Resilient Smart City

New D2 Gas-Fired Generation Unit



Entered service in April 2024 to accelerate our energy transition

Offshore LNG terminal & FSRU



Fully operational to support Hong Kong's decarbonization goals

Green Transportation



Support the electrification of private cars and commercial vehicles

Smart Meters



Aiming to provide smart meters for all CLP Customers by 2025 to help turn Hong Kong into a Smart City



-  Promote Decarbonisation
-  Boost Economy
-  Care for the Community

HK\$240 Million

-  Subvented Organisations
-  Residential Customers
-  Business Customers
-  The Underprivileged
-  Tenants of Subdivided Units
-  Elderly People
-  Youth



CLP Community Green Programme

HK\$50 million

Subvented Organisation Energy Saving Improvement Scheme

HK\$44 million

- Provide one-stop energy services including free energy audits
- Subsidies for energy efficiency improvements



Inverter Air Conditioner Replacement Subsidy Scheme

HK\$5 million

- Assist **1,200** family in need to replace inverter air conditioners
- Subsidy for each air conditioner capped at **70%** of the selling price or **HK\$2,800**



Building Electrical Safety Advisory Service

HK\$1 million

- Provide power quality investigations on electrical equipment for buildings in need
- Recommend cost-effective solutions to improve electrical safety



CLP Retail and Catering Coupons

HK\$58 million

580,000 beneficiary households

- Coupons with a total value of **HK\$100** for each household
- Use in more than **2,500** participating restaurants and retail outlets



CLP Electricity Subsidies for Underprivileged Families

HK\$50 million

70,000 beneficiary households

- Electricity subsidies of **HK\$600** to each of **50,000** underprivileged households
- Electricity subsidies of **HK\$1,000** to each of **20,000** tenants of subdivided units





HK\$240 Million

**Boost
Economy**



**Promote
Decarbonisation**



**Care for the
Community**